

Example 13

4320 ARGENTINA - Estrecho de Magallanes - Cabo Espiritu Santo Eastwards - Radar beacon.

Light List Vol. G, 2003/04, 1260,6

ALRS Vol. 2, 2004/05: 92930 (37/04)

Source: Argentine Notice 15/170/04

(*III.548 400-04 e14*).

Chart 554 [*previous update 2740 04*] UNDETERMINED DATUM

Insert radar beacon, Racon (D), at platform 52° 41' 0S., 68° 02' 5W.

Chart 1692 [*previous update 3653 04*] UNDETERMINED DATUM

Insert radar beacon, Racon (D), at platform 52° 41' 0S., 68° 02' 5W.

Chart 3107 [*previous update 2740 04*] UNDETERMINED DATUM

Insert radar beacon, Racon (D), at platform 52° 41' 0S., 68° 02' 5W.

Notes

This update requires a radar beacon (racon) to be added at a platform symbol. Draw a neat circle using a circle template. The exact size of the circle is not important, but it should be as close as possible to that shown on the tracing. Add the legend 'Racon (D)' alongside.

Folio
96

NM 4320/04

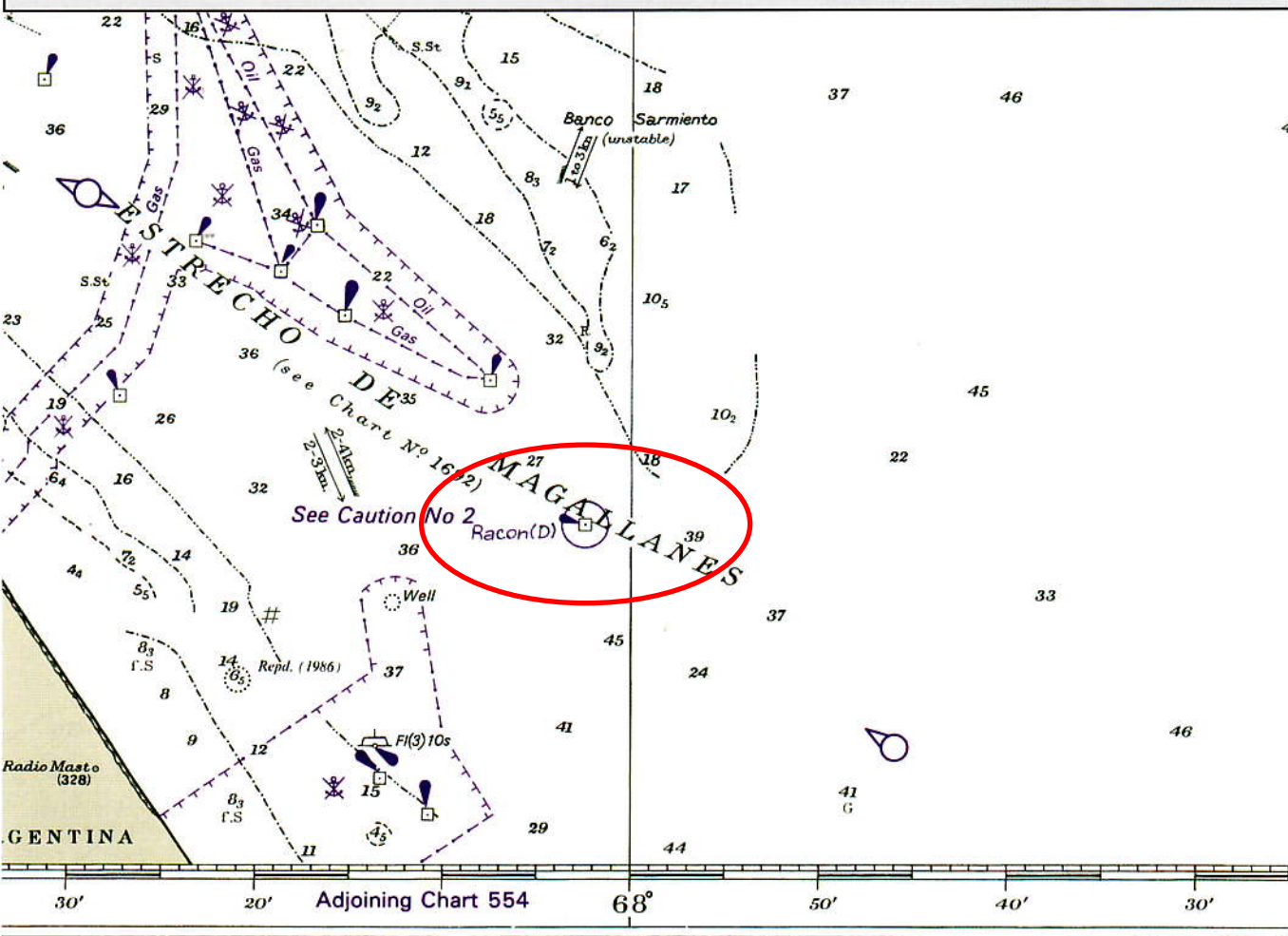
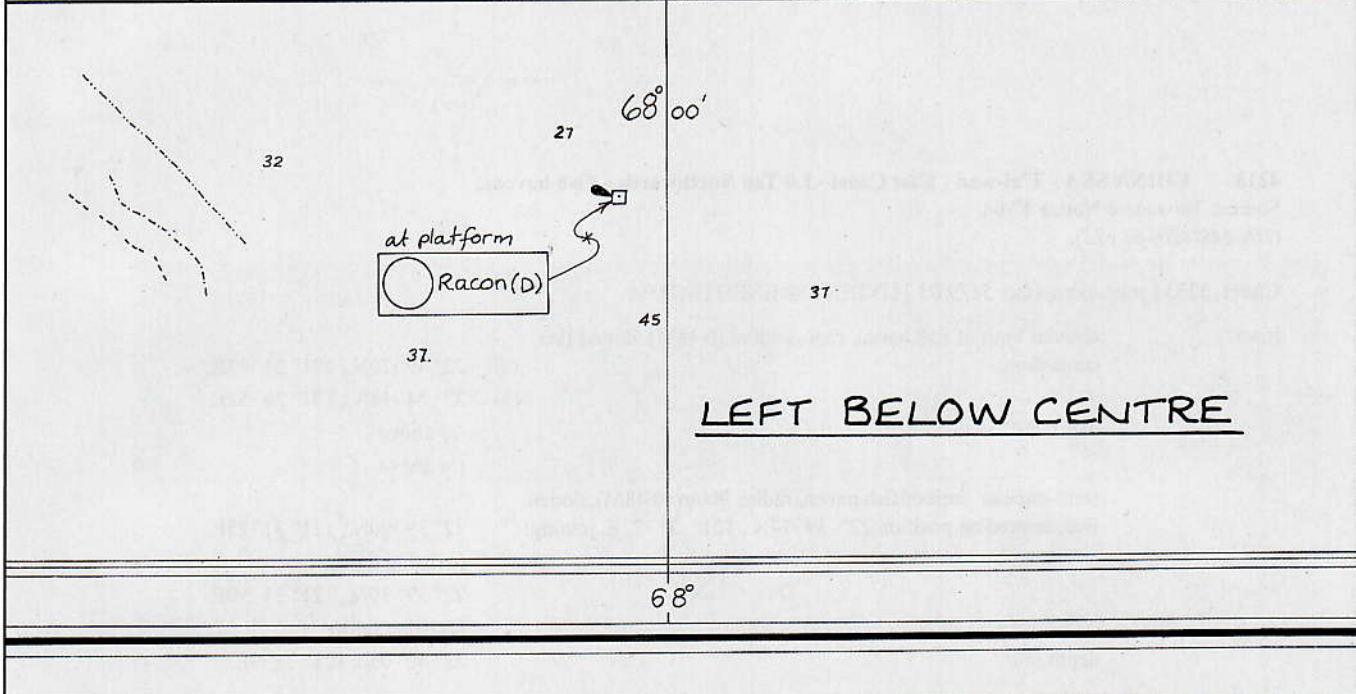
Previous Update
2740/04

NC/NE
JAN. 64

Chart No
3107

© Crown Copyright 2004 All rights reserved

Tracing Size
120 x 185 mm



Example 14

4213 CHINA SEA - T'ai-wan - East Coast - Lü Tao Northwards - Fish havens.

Source: Taiwanese Notice 47/04

(IHH.549 420 -03 e23).

Chart 3233 [previous update 5179 03] UNDETERMINED DATUM

Insert	circular limit of fish haven, radius 900m (0.48M), dotted line, centred on:	(a)	22° 49' 20N., 121° 25' 32E.
		(b)	22° 54' 18N., 121° 26' 52E.
	depth (60), within:	(a)	above
		(b)	above
	semi-circular limit of fish haven, radius 900m (0.48M), dotted line, centred on position 22° 39' 74N., 121° 31' 72E., joining:		22° 39' 90N., 121° 31' 25E. (existing limit)
			22° 39' 30N., 121° 31' 90E. (existing limit)
	depth (60)		22° 40' 0N., 121° 31' 9E.

Chart 3234 [previous update 1837 02] UNDETERMINED DATUM

Insert	circular limit of fish haven, radius 900m (0.48M), dotted line, centred on:	(a)	22° 49' 20N., 121° 25' 32E.
		(b)	22° 54' 18N., 121° 26' 52E.
	depth (60), within:	(a)	above
		(b)	above

Notes

This update is similar to the previous one where a circle template can be used with a circle precisely the correct size. If not, it will be necessary to use a compass with a pen attachment to achieve the exact radius of 900m (0.48M). Place the fish symbol and the depth in open space inside the circle. Do not arrow them into position.

Folio
50

NM 4213/04

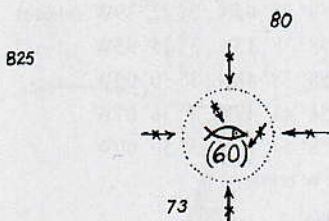
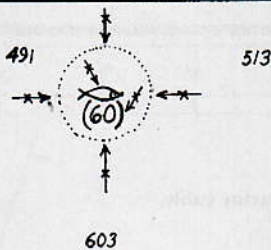
Previous Update
5179/03

NC/NE
MAR. 81

© Crown Copyright 2004. All rights reserved

Chart No
3233

Tracing Size
240 x 185 mm



121° 30'

22° 45'

