

Example 7

4106 PERU - Approaches to Talara and Punta Arenas - Leading lights. Buoyage. Depths.

Light List Vol. G, 2003/04, 2139, 2139.1

Source: Peruvian Chart 1126

(*H11.643 510-03 e9*).

Chart 3089 (plan A, Talara) [*previous update 2440 04*] UNDETERMINED DATUM

Insert

★ F.G

(a) 4° 35' 308S., 81° 17' 165W.

4° 35' 276S., 81° 17' 230W.

leading line, pecked line for 1100m then firm line for 1400m.

extending in direction 295.7° from:

(b) (a) above

legend, 115.7°, seaward end of:

(b) above

Notes

When inserting a new leading line it is important to follow the instructions in the NM exactly so that the right amount of pecked and firm line is shown. This ensures that the user has a clear understanding of how these lights are used for navigation.

Folio
98

NM 4106 / 04
Previous Update
2440 / 04

NG/NE
JAN. 02

Chart No
3089

PLAN (A)
TALARA

© Crown Copyright 2004 All rights reserved

Buoyage₁₁
(see Note)

F.G

Oilfield Area
(see Note)

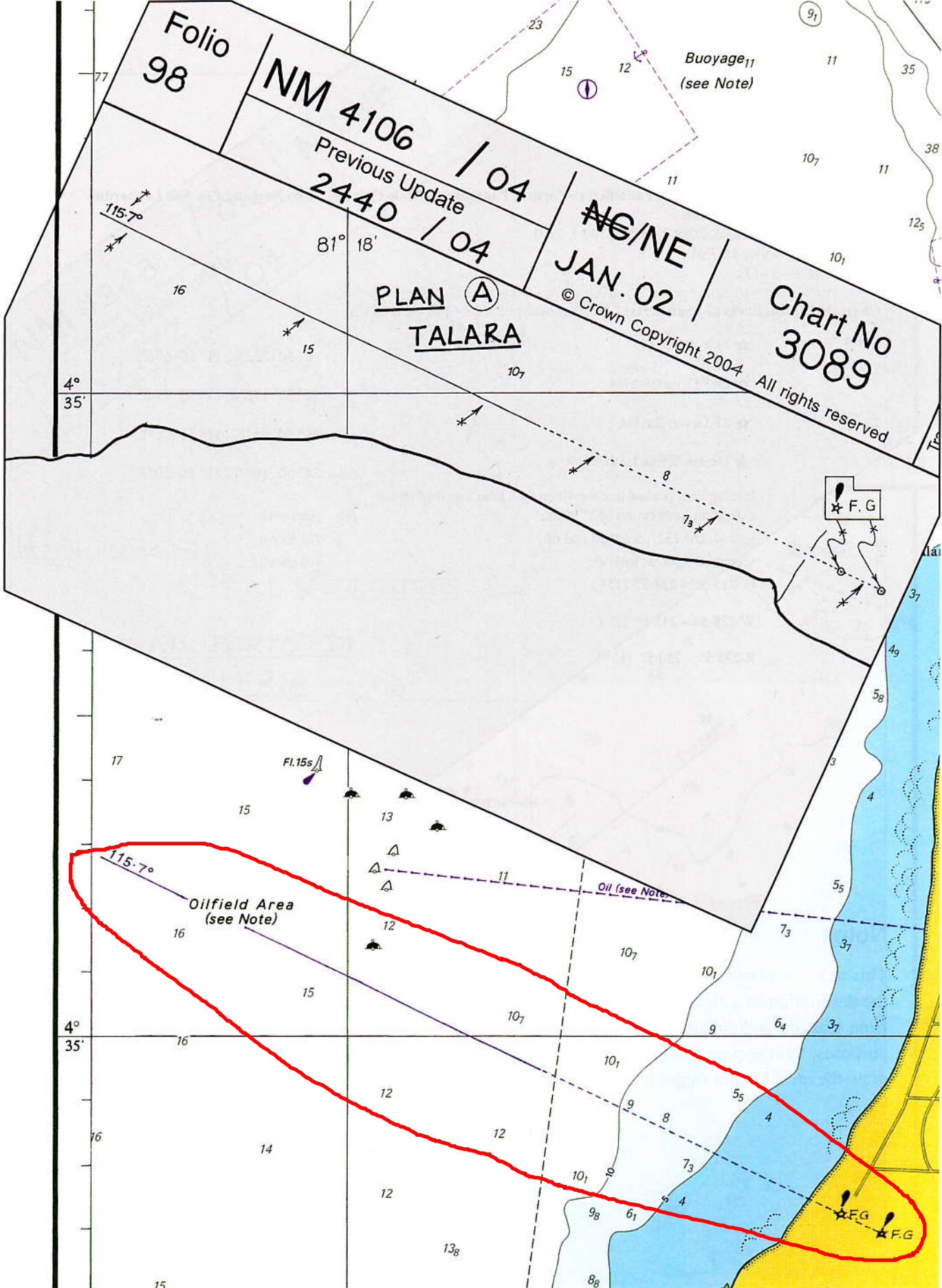
Oil (see Note)

115.7°

81° 18'

4°
35'

4°
35'



Example 8

4243 ITALY - Sicilia - Isola di Pantelleria - Porto di Pantelleria - Molo Cidonio, Molo Nasi and Pta. San Leonardo - Lights. Leading line.

Light List Vol. E, 2004/05, 2098.2, 2100, 2100.5, 2101

Source: Italian Notice 16.7/04

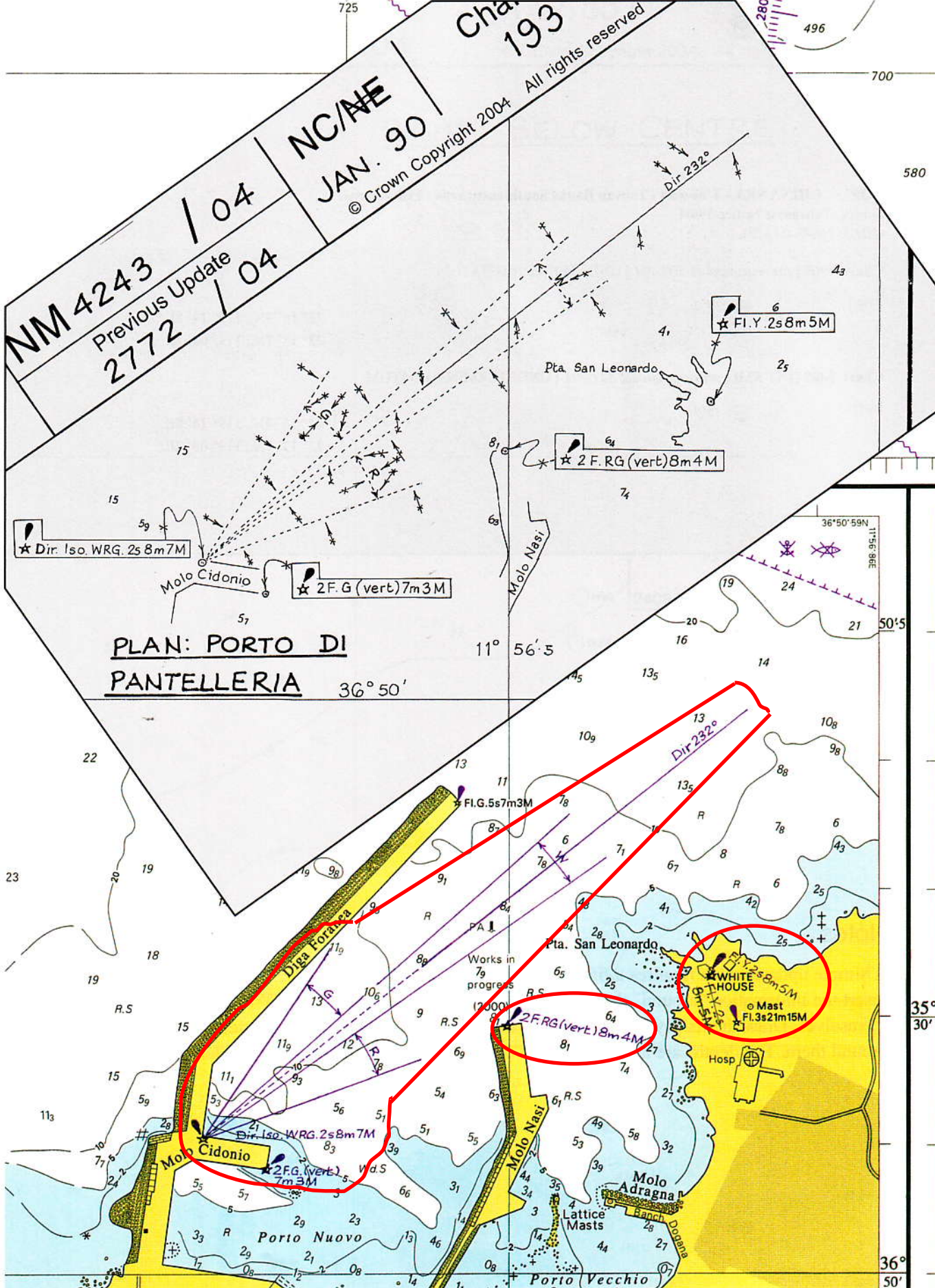
(III.373 400-03 e13).

Chart 193 (plan, Porto di Pantelleria) [previous update 2772 04] ED50 DATUM

Insert	★ FLY.2s8m5M	36° 50' 252N., 11° 56' 698E.
	★ 2F.RG(vert)8m4M	36° 50' 192N., 11° 56' 498E.
	★ 2F.G(vert)7m3M	36° 50' 082N., 11° 56' 263E.
	★ Dir.lso.WRG.2s8m7M	(a) 36° 50' 107N., 11° 56' 202E.
	leading line, pecked line for 400m then firm line for 600m, extending in direction 052° from: legend, Dir 232°, seaward end of: sectors at light, as follows:	(b) (a) above (b) above (a) above
	G 213.5° - 228.5° (15°)	
	W 228.5° - 235.5° (7°)	
	R 235.5° - 250.5° (15°)	

Notes

This is a small but complex light sector. Draw the light star and flare in the correct position with the description in a clear space as close as possible. Remember that bearings for lights are shown from seaward and either plot the sectors of the light or use the tracing as a guide. For updating purposes, light sectors can be drawn as solid lines. It is good practise to use a pair of compasses to draw the arcs. Do not forget to show the colours of the sectors against the arcs.



PLAN: PORTO DI PANNERIA

NM 4243 / 04
 Previous Update 2772 / 04
 NC/AE
 JAN. 90
 © Crown Copyright 2004 All rights reserved

Dir 232°

6
 ☆ FI. Y. 2s 8m 5M

Pta. San Leonardo

8₁
 ☆ 2 F. R. G. (vert) 8m 4M

Molo Nasì

Molo Cidonio

☆ 2 F. G. (vert) 7m 3M

36° 50' 59" N
 11° 56' 96" E

11° 56' 5"

36° 50'

Dir 232°

FI. G. 5s 7m 3M

Works in progress
 12000

☆ FI. Y. 2s 8m 5M
 WHITE HOUSE

o Mast FI. 3s 21m 15M

☆ 2 F. R. G. (vert) 8m 4M

Molo Cidonio
 ☆ 2 F. G. (vert) 7m 3M

Molo Adragna
 Lattice Masts

Porto Nuovo

Porto Vecchio

35° 30'

36° 50'